

Product Description

Bebco PMB Division Model ISRC Three-Sided Sheds, Instrument Racks & Canopies provide shelter from inclement weather in both normal and highly corrosive environments encountered in all industries, including petrochemical, aerospace, agricultural, water treatment and commercial facilities, in on-shore, near-shore and off-shore areas.

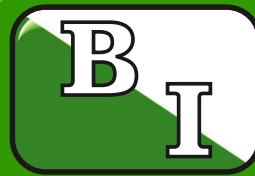
Typical applications include analyzer sheds, analyzer racks, transmitter sheds, instrumentation sheds, protective ground level canopies, first-aid stations, fire safety or smoke shacks, rain covers and other structures. These units then serve to provide shelter for analytical and electrical equipment, pumps, motors and personnel from rain, sleet, hail, snow and falling objects.

Support frames may be formed from angle iron, channel iron, tubular steel or "I" beams in carbon steel, galvanized steel or stainless steel materials. Wall and roof systems may be formed from Bebco's highly durable 22 to 12 gauge galvanized, aluminum or stainless steel interlocking panels, or from lightweight self-supporting commercial grade metal or fiberglass corrugated or "R" panels. Roof are offered in either shed or gable styles with 24 x 24 feet maximum spans, and all units can be formed in single or double wide pre-assembled or kit forms for easy field assembly at greatly reduced shipping costs.

These rugged structures may also be enhanced to include interior and exterior lighting, power distribution, fire fighting equipment, extinguishers, safety or first aid supplies, and seating areas to pre-equip these units for any application.

Product Configurations

Three-Sided Sheds are typically formed with partially (top and/or bottom) ventilated walls and overhanging roofs to provide maximum protection against wind-driven rain and snow. Instrument Racks may be formed either with or without rain canopies or hoods, and are typically outfitted with equipment mounting rails or structural steel that will be utilized to support field equipment. Canopies may be formed as either self supported or partially supported structures, field-ready to cover equipment or protect personnel.



Model ISRC

Industrial Duty Sheds, Racks & Canopies

Metal & Fiberglass Shelter Units in pre-assembled or kit configurations

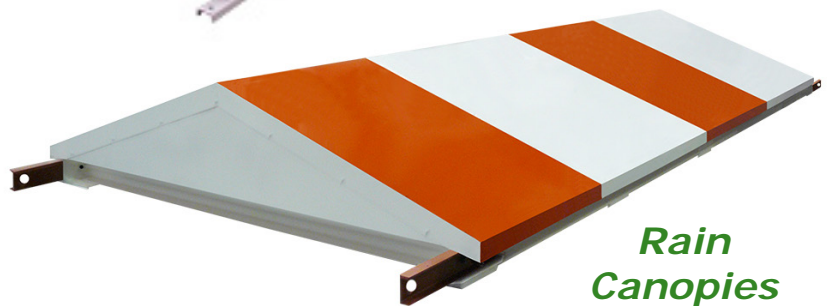
PMB Division Technical Bulletin ISRC R-1.0

08.2010

*Three-Sided
Sheds*



*Instrument
Racks*



*Rain
Canopies*



Bebco Industries
Industrial Housing & Access Solutions

5235 Delaney Rd • Hitchcock, Texas 77563

Phone: 409.935.5743 • Fax: 409.938.4189
www.okbebco.com • 1.800 OK BEBCO

Optional Features provide a custom-tailored solution...

Shed, Rack & Canopy Frames

Angle Iron

Angle Iron is commonly used to form an economical but resilient frame for the majority of our three-sided sheds. Sizes can vary as required to accommodate various wall and roof weight loads, and as with all other frames styles, any finish can be achieved.



Channel Iron

Channel Iron is used frequently for instrument racks, when equipment is mounted on both the front and rear sides. While channel iron provides much more strength than angle iron, the cost difference is negligible.



I-Beam

I-Beam is utilized to form heavy-duty racks, sheds and canopies, when these structures will be subjected to extreme weight loads. Sizes can vary, and this material can be combined with angle iron and channel iron as required, to form an incredibly durable structure.



Structural Tubing

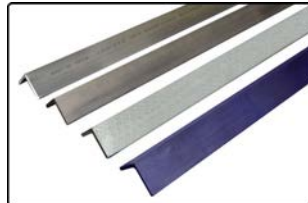
As used in this canopy kit, structural tubing can be used to obtain both greater strength and aesthetic value. As an option to other framing, the cost difference is nominal.



Frame & Sheeting Materials

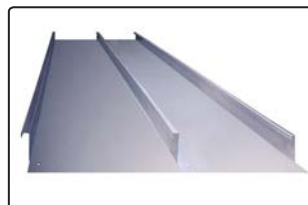
Frame Materials

Standard frame options include primed, painted or metalized carbon steel in any grade. We also offer galvanized steel, aluminum and 304 or 316 grade stainless steel.



Interlocking Panels

Nothing can come close to the strength and beauty of Bebcos interlocking wall and roof panels. They're custom built to purpose, and available in a wide range of gauges, materials and surface finishes.



Metal Sheeting

Bebco offers commercial metal sheeting in the most popular colors and corrugated or "R" panel configurations. We can also match the sheeting material of any existing structures if you prefer to ensure your new shed, rack or canopy will complement or match nearby structures.



Fiberglass Sheeting

Fiberglass sheeting is offered in both standard stock or specific brands, colors or styles. Bebcos can also source fiberglass sheeting to match your existing jobsite structures upon request.



Frame & Sheeting Finishes

Natural Finishes

The inherent properties of galvanized, stainless steel or aluminum framing and galvanized or fiberglass panels require little or no maintenance, and perform well in moderate industrial environments to minimize costs.

Galvanized Finishes

Pre-galvanized frame material with zinc spray coated welds will satisfy many corrosive environment applications. Hot-dip coatings are also available, but some limits due to potential warping or overall size may apply.

Metalized Finishes

A metalized finish is highly recommended as an option to galvanized or painted finishes, due to the superior protection, lower application cost and long-term corrosion protection it provides with low maintenance over significant periods of time.

Paint Finishes

Spray applied paint finishes offer years of dependable service with reasonable and diligent maintenance. Durable standard finishes, and custom colors or specific paint blends are offered, in any verifiable mil thickness desired.

Select from a wide range of standard or custom sizes...

One Piece Shed & Canopy Styles

02x02	03x03	04x04	05x05	06x06	08x08	10x10	12x12	14x14
02x03	03x04	04x05	05x06	06x08	08x10	10x12	12x14	14x16
02x04	03x05	04x06	05x08	06x10	08x12	10x14	12x16	14x18
02x05	03x06	04x08	05x10	06x12	08x14	10x16	12x18	14x20
02x06	03x08	04x10	05x12	06x14	08x16	10x18	12x20	14x22
02x08	03x10	04x12	05x14	06x16	08x18	10x20	12x22	14x24
	03x12	04x14	05x16	06x18	08x20	10x22	12x24	
		04x16	05x18	06x20	08x22	10x24		
			05x20	06x22	08x24			

Two Piece Shed & Canopy Styles

16x16	18x18	20x20	22x22	24x24
16x18	18x20	20x22	22x24	
16x20	18x22	20x24		
16x22	18x24			
16x24				

All One & Two Piece Style dimensions shown reflect depth x width of Shed or Canopy

One Piece Style Sheds & Canopies are available with shed or gable roofs

Two Piece Style Sheds & Canopies are available with gable roofs only

Ordering Information

In three simple steps, you can acquire a quotation for the Three-Sided Shed, Instrument Rack or Rain Canopy you need to satisfy your application.

Step 1: Envision your need

Using the wide range of examples presented in this Technical Bulletin or the growing number of highly detailed finished examples in our website, develop a simple sketch of the product you need or contact a BebcO Sales Associate to discuss options and needs.

Step 2: Determine your requirements

Consider the jobsite location or climate zone, any potential exposure to corrosive chemicals, the weight-load of any equipment to be supported and the need for any particular engineering certification, such as wind load, seismic load, fire resistance or snow load.

Step 3: Submit your inquiry

Use our website's [Quick Inquiry Form](#) to submit your designs and specifications, use our detailed [Shed, Rack & Canopy Inquiry Form](#) to select from a wide range of options and features, or simply call us at 1-800 OK BEBCO (652-3226) to get us started!

Bebco's flexibility and attentive regard to your specific needs make it easy to get a price for the structure you require!

*Visit our website to learn more
and fuel your imagination...*



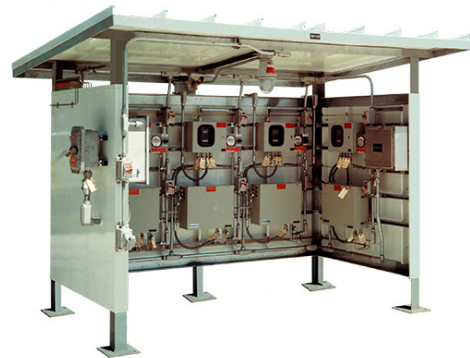
Light, Medium & Heavy Duty Frame Capacities



Corrosion Resistant & Custom Designs



*Kit-Form &
Sectional Configurations*



Complete Equipment Integration



Bebco Industries
Industrial Housing & Access Solutions

5235 Delaney Road, Hitchcock, Texas 77563
Phone: 409.935.5743 or 1.800.OKBEBCO (1.800.652.3226)
Fax: 409.938.4189 Website: www.okbebc.com